

USER GUIDE

for



aegex10™ Intrinsically Safe Tablet



AEGEX TECHNOLOGIES LLC
Flatiron Building,
84 Peachtree St. NW,
Atlanta, GA 30303 USA
Phone: +1 (470) 242-4000
Email: contact@aegex.com

Intrinsically Safe Solutions by Design

www.aegex.com

Aegex Technologies LLC
Hungarian Branch Office
H-7632 Pécs, Tildy Zoltán u. 27/1.

REGULATORY STATEMENTS

FCC & IC STATEMENTS

This equipment has been tested and found to comply with the limits for a Class B digital device, pursuant to Part 15 of the FCC Rules. These limits are designed to provide reasonable protection against harmful interference in a residential installation. This equipment generates uses and can radiate radio frequency energy and, if not installed and used in accordance with the instructions, may cause harmful interference to radio communications. However, there is no guarantee that interference will not occur in a particular installation. If this equipment does cause harmful interference to radio or television reception, which can be determined by turning the equipment off and on, the user is encouraged to try to correct the interference by one of the following measures:

- Reorient or relocate the receiving antenna.
- Increase the separation between the equipment and receiver.
- Connect the equipment into an outlet on a circuit different from that to which the receiver is connected.
- Consult the dealer or an experienced radio/TV technician for help.

This device complies with Part 15 of the FCC Rules. Operation is subject to the following two conditions: (1) This device may not cause harmful interference, and (2) this device must accept any interference received, including interference that may cause undesired operation.

Any changes or modifications not expressly approved by the party responsible for compliance could void the user's authority to operate this equipment. This device complies with FCC and Industry Canada RF radiation exposure limits set forth for general population (uncontrolled exposure). This device must not be collocated or operating in conjunction with any other antenna or transmitter.

This device complies with Industry Canada licence-exempt RSS standard(s). Operation is subject to the following two conditions: (1) this device may not cause interference, and (2) this device must accept any interference, including interference that may cause undesired operation of the device.

Le présent appareil est conforme aux CNR d'Industrie Canada applicables aux appareils radio exempts de licence. L'exploitation est autorisée aux deux conditions suivantes: (1) l'appareil ne doit pas produire de brouillage, et (2) l'utilisateur de l'appareil doit accepter tout brouillage radioélectrique subi, même si le brouillage est susceptible d'en compromettre le fonctionnement.

CE STATEMENT

1418

Aegex Technologies LLC, Flatiron Building, 84 Peachtree Street NW Atlanta, GA 30303 USA hereby declare, under its sole responsibility that the product aegex10™ Intrinsicly Safe Tablet is in conformity with the relevant European Union harmonization legislation:

EMC Directive 2014/30/EU,
Low Voltage Directive 2014/35/EU,
Radio Equipment Directive (RED) 2014/53/EU
Restriction of Hazardous Substances (RoHS) Directive 2011/65/EU.

COUNTRY SPECIFIC APPROVAL DATA:

South Africa	ICASA TA-2015/2247 approved
Oman	TRA R/2983/15; D090016
UAE	Registered No. : ER91724/20; Dealer No: DA46969/15
Qatar	ictQATAR Type Approval Reg. No. : CRA/SA/2015/R-5227 Importer No. C.P/C.R. 41570

Australia - RCM logo can be found by pressing Windows button/ Settings/ System / About/ System info. That is part of the Aegex Image.

Singapore - IMDA standard info
IMDA Dealer Licence No. DA107248

Canada - ISED
RSS-GEN 6.4(c)(i), operation in the band 5150-5250 MHz is only for indoor use.
IC: 21074 - AEG10LTB1

Country Specific labels are visible in the battery compartment, after the removal of the battery.

FRONT

Ambient Light Sensor
Recognizes the ambient light and adjusts the display brightness if enabled in the operating system.

1

Front Microphone Outlet

2

Front Camera
2 MP camera for video conferencing

3

Camera Indicator LED
Lights up if camera is activated and during device boot and shutdown

4

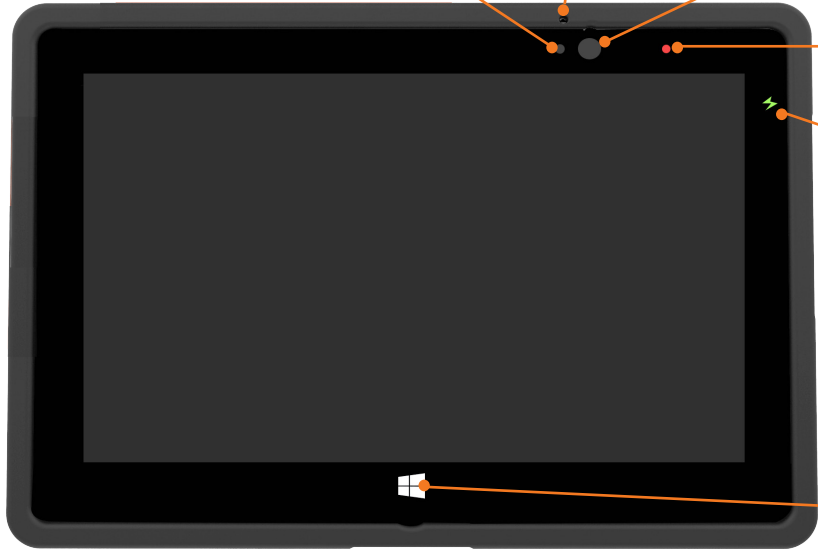
Charging Indicator LED
OFF not connected to charger
ORANGE charging
GREEN fully charged
RED charge error

5

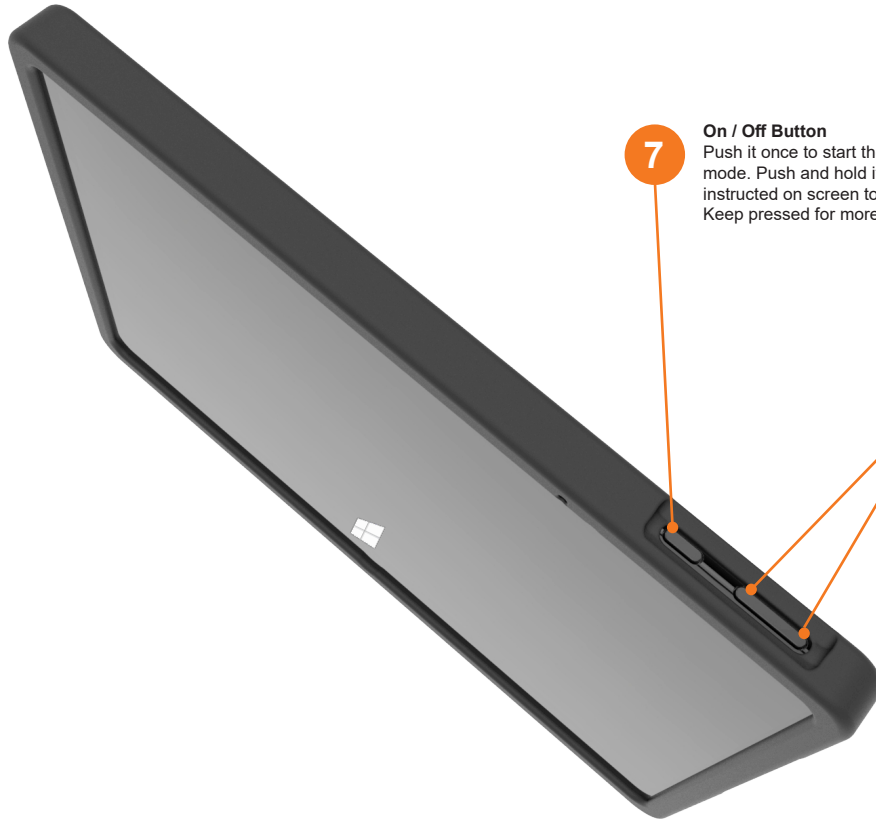
Due to Li-ion battery technology, deep discharge can happen. To return to normal condition battery needs to be charged longer. Use a charging/docking station for battery recovery.

Windows Home Button (Windows Icon)
Home button needs to be tapped by a larger surface than the other areas of the touch screen until you feel the haptic feedback. It is recommended to press the home button with your thumb, finger parallel to the length of the tablet.

6



Screen protectors must meet the anti-static requirements for the hazardous locations where the tablets are used.



7

On / Off Button

Push it once to start the tablet; push it again to enable the sleep mode. Push and hold it to shut down the device. You will be instructed on screen to slide to shut down your device. Keep pressed for more than 10 seconds for hard reset.

8

Volume Keys

Push the left button (-) to reduce the volume, use the right button(+) to increase the volume.

RIGHT AND BOTTOM SIDES



REAR VIEW

NFC Antenna Position
Can be used to read HF (13.56MHz)
NFC & RFID tags with appropriate software.

18 Rear Microphone Outlet

19 Camera Flash LED

20 Rear Camera
SMP camera for high resolution
images & video

21 Battery Cover

22 Data table and Warning info
(Marking information)



TO REMOVE THE BATTERY COVER:



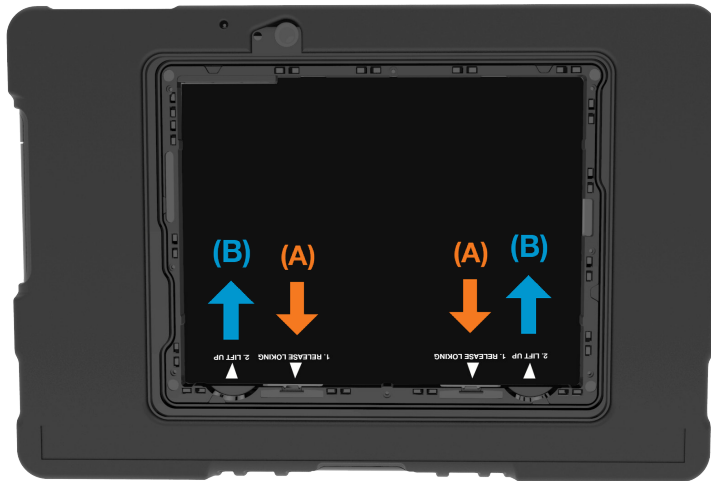
1. Remove the 4 screws using the provided screwdriver.



2. Use the provided pry tool to disengage the snaps. Insert the pry tool under the battery door at the bottom left corner as presented in the picture above. Then with the pry tool inserted under the door, carefully drag the pry tool around all edges and slowly lift the cover.

Note: Any damage to the battery cover snaps due to improper handling is not covered by warranty.

REPLACING BATTERY / ADDING SIM CARD



3. Release locking by pulling on the battery holder hook (A) towards the bottom of the device, then pull the battery up (B). Repeat process for other battery holder hook.



4. Enter the Micro SIM card into the slot in the center of the right side. Make ensure the Micro SIM card in the correct direction (chip facing down). Attention! Only Micro SIM card to be used. Do not use Nano-to Micro SIM card adapters!

Do not remove or replace the battery pack while in a known hazardous location!

REPLACING BATTERY / ADDING SIM CARD

TO PUT THE BATTERY BACK IN PLACE:



1. Replace the 4 corner screws of the battery cover using the provided tool. The recommended torque for the screw is 10-12 Ncm.



2. To remove the battery door screws and the battery door, please follow the instruction on page 7.

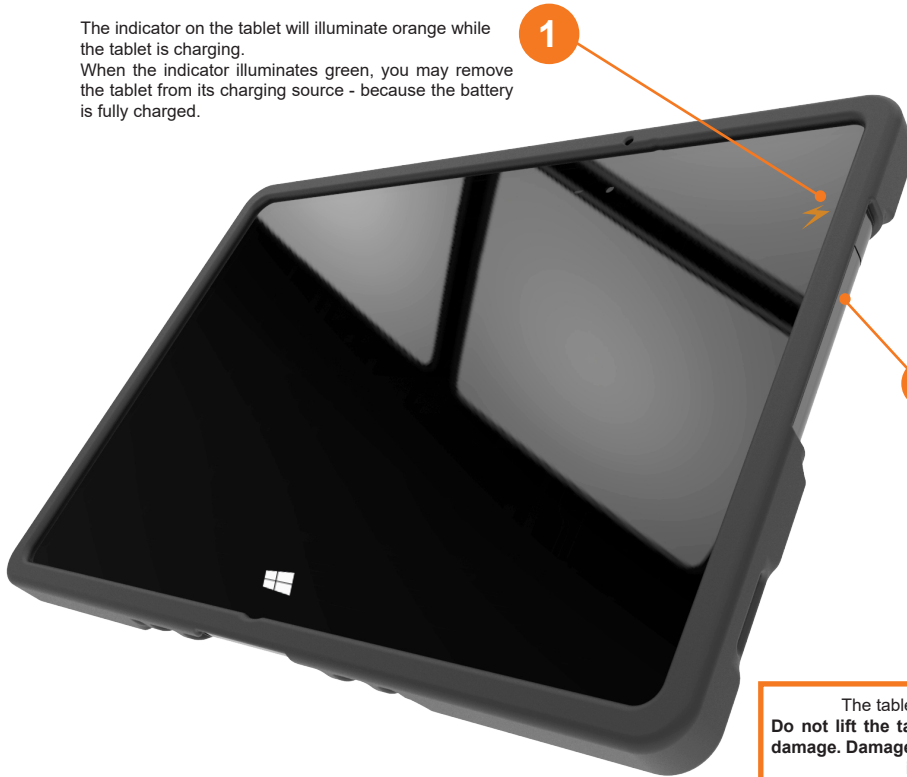


3. Make sure the battery securely clicks in place on both sides.

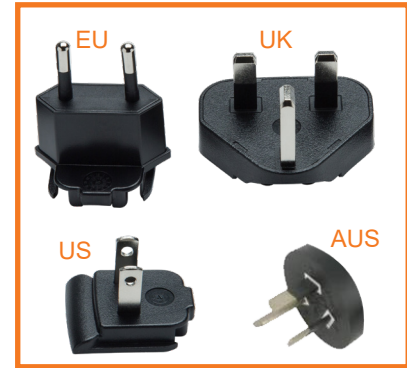
Do not remove or replace the battery pack while in a known hazardous location!

CHARGING THE TABLET WITH WALL CHARGER

The indicator on the tablet will illuminate orange while the tablet is charging.
When the indicator illuminates green, you may remove the tablet from its charging source - because the battery is fully charged.



Select the appropriate plug and slide it on the tracks to connect to the wall charger.
Connect the USB end of the charging cord to the wall charger.



2

Open the cover on the right hand side of the tablet.
Connect the microUSB from the wall charger by pushing the microUSB plug perpendicular to the port.



The tablet should be handled with care while the microUSB is plugged in.
Do not lift the tablet by the USB charging cord because it could cause irreparable damage. Damage of the USB port is not covered by warranty. For frequent charging it is recommended to use charging or docking station.

In Hazardous Locations



Your device is suitable for use in various hazardous environments depending on model number and certification string.

All openings must be securely closed before use in a hazardous environment. **Do not connect or disconnect USB, charger, headset or docking station in a hazardous environment.**

Ne pas brancher ou débrancher USB, chargeur, écouteur ou une station d'accueil dans un environnement dangereux.

DO NOT REMOVE OR REPLACE THE BATTERY PACK WHILE IN A KNOWN HAZARDOUS LOCATION

AVERTISSEMENT - RISQUE D'EXPLOSION -AFIN D'EVITER TOUT RISQUE D'EXPLOSION, S'ASSURER QUE L'EMPLACEMENT EST DESIGNÉ NON DANEREUX AVANT DE CHANGER LA BATTER IE

BATTERIES MUST ONLY BE CHARGED IN AN AREA KNOWN TO BE NON-HAZARDOUS

Les PILES DOIVENT seulement etre rechargees dans une region pas dangereuse.

Warning Statements

To prevent possible hearing damage, do not listen at high volume levels for long periods.

Pour eviter tout dommage possible a l'ou'ie, n'écoutez pas aux niveaux de volume eleve pen-dant de longues periodes.

Get support:



Use this QR code

or

www.aegex.com/support

IN HAZARDOUS LOCATIONS / TROUBLESHOOTING

Troubleshooting

In case device freezes or in emergency mining situation you need to hard reset, press and hold the power button for more than 10 seconds. Device will be turned off immediately.



www.aegex.com/troubleshooting

Antenna Positions

Your device meets guidelines for exposure to radio waves (SAR, Specific Absorption Rate) when kept in a minimum distance of 2.5cm to your body. It is recommended to learn the antenna positions (LTE devices only) as mentioned below and not to touch or bring your body closer than 2.5 cm to these antenna areas.



IMPORTANT PRODUCT AND SAFETY INFORMATION

Warranties

For more information on warranty services of aegex10 please visit our site at www.aegex.com/Support/Warranty.

Do not leave the device in direct sunlight because the excessive heat can damage the LCD, it is not covered by any warranty terms.

General Information

- Do not drop, bend or twist your tablet. This can break tablet display glass, internal circuit boards or mechanics. If the glass breaks, do not touch the glass parts of the device or attempt to remove the broken glass from the device. Stop using the device until authorized service personnel replace the glass.
- Do not try to disassemble your tablet. This may damage the device and will void warranty.
- Do not connect USB, charger, headset or docking station in a hazardous environment.
- Operate your device in a place where temperature is between -10°C and +50°C and humidity is between 10% and 90%.
- Any unauthorized service is prohibited and will void the warranty.
- Store your device in a place where temperature is between -20°C and +60°C.
- Protect your device from water and moisture intake. Keep connector doors closed when not in use to prevent water and moisture intake.
- Listen to a headset at a moderate level, and do not place the device loudspeaker outlets near your ear when the loudspeakers are in use.
- Use only soft, clean and dry lint-free cloth to clean your device.
- Keep the unit and accessories away from small children.
- Switch off your device before boarding an aircraft.
- Your device meets guidelines for exposure to radio waves (SAR, Specific Absorption Rate) when kept in a minimum distance of 2.5cm to your body.
- **Charge your device with the supplied charger in a place where temperature is between 0°C and +40°C.**
- **Only use USB charger delivered with tablet: power rating 5V - 2A.**
- Do not disconnect charger by pulling the cord, doing so might void the warranty.
- Do not use damaged power cords or plugs.
- Do not use Nano-to-Micro SIM card adapters.

Save energy: You can save energy by doing following.

- Close unused applications and data connections.
- Decrease screen brightness and sound volume.
- Deactivate unnecessary sounds like touch panel sound.
- Disconnect your charger from main outlet when charger is not needed.
- Do not keep unnecessary accessories connected in your device.

Battery Safety

Visually inspect battery, battery door and port covers on a regular basis.

Your rechargeable lithium ion polymer battery operates on 3.8V and 8700mAh, 33Wh (Manufactured by Sunwoda AMME3203)

- *DO NOT REMOVE OR REPLACE THE BATTERY PACK WHILE IN A KNOWN HAZARDOUS LOCATION AVERTISSEMENT - RISQUE D'EXPLOSION - AFIN D'EVITER TOUT RISQUE D'EXPLOSION, S'ASSURER QUE L'EMPLACEMENT EST DESIGNE NON DANEREUX AVANT DE CHANGER LA BATTERIE*
- Batteries have life cycles. If the time that the battery powers equipment becomes much shorter than usual, the battery life might be at the end.
- Fully charge the battery at least every 6 months.
- Keep the device away from heat/battery temperature not to exceed 60°C.
- Do not throw battery into a fire as it may explode.
- Do not soak the battery with liquid like water, tea, coffee etc.
- Do not hit, bend, deform or drop the battery.
- Do not pierce battery with a sharp object such as a needle, etc.
- The battery should not have liquid from electrolyte flowing, but in case the electrolyte comes in contact with eyes, don't rub your eyes. Wash your eyes well with clean water and go to see a doctor immediately. In case the electrolyte comes in contact with your skin, wash affected a well with clean water.
- Do not externally short-circuit the battery. If externally short-circuited, the battery may be heated, ignited or broken.
- Only use the correct battery type for this device. Incorrect battery may cause damage.
- Follow the instructions below for proper battery disposal.
- Battery MSDS can be found at <http://aegex.com/support>

Recycle: Return your used electronic units to dedicated collection points. Please note that your tablet has a battery - this cannot be disposed of with normal household waste, it must be recycled separately.



AEG-DPU-0001-12-01

